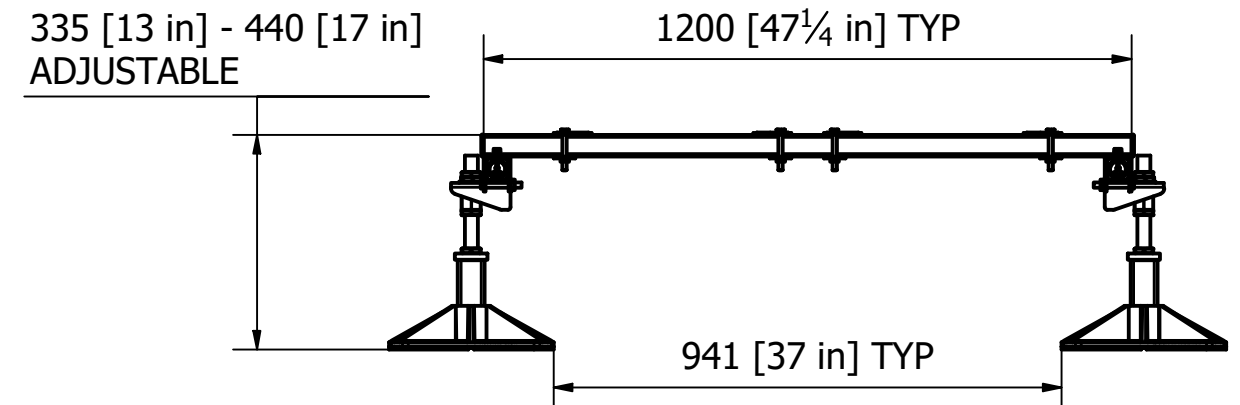
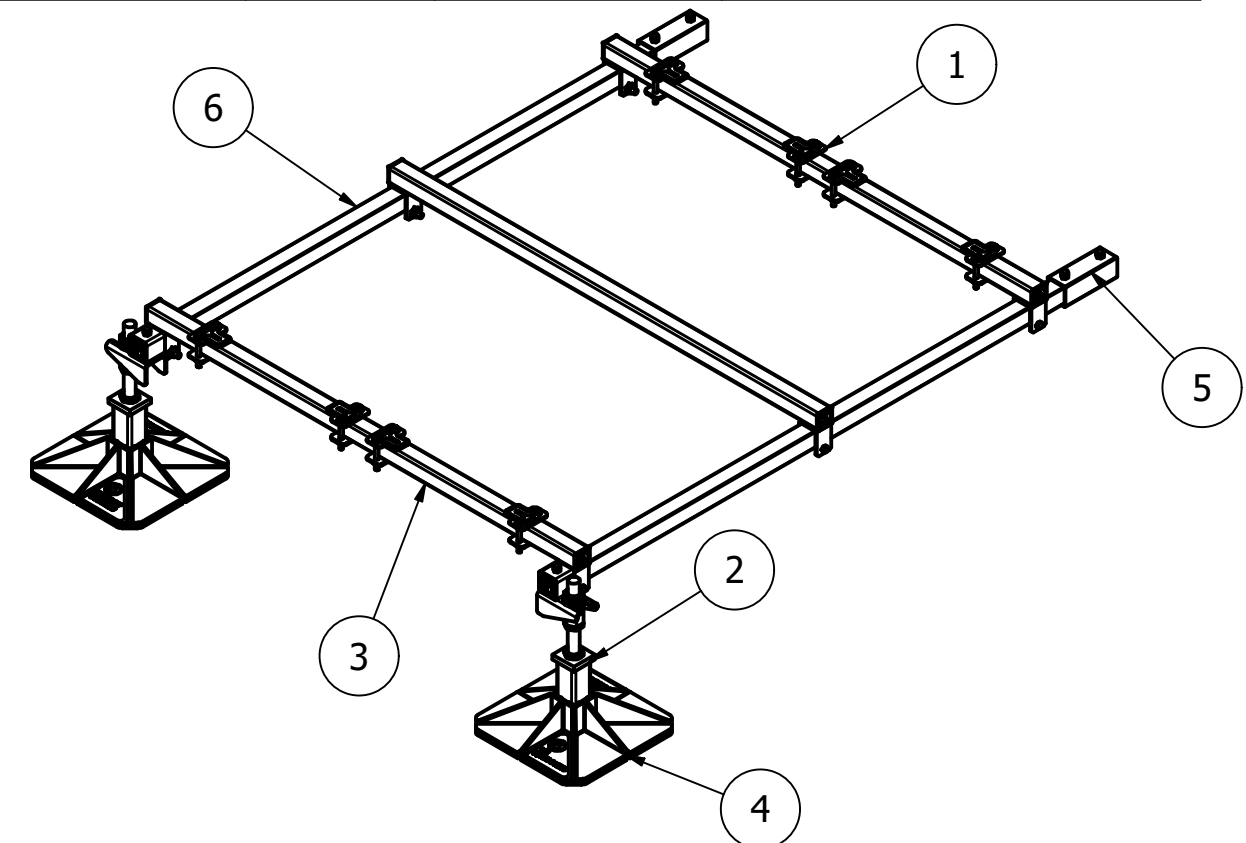
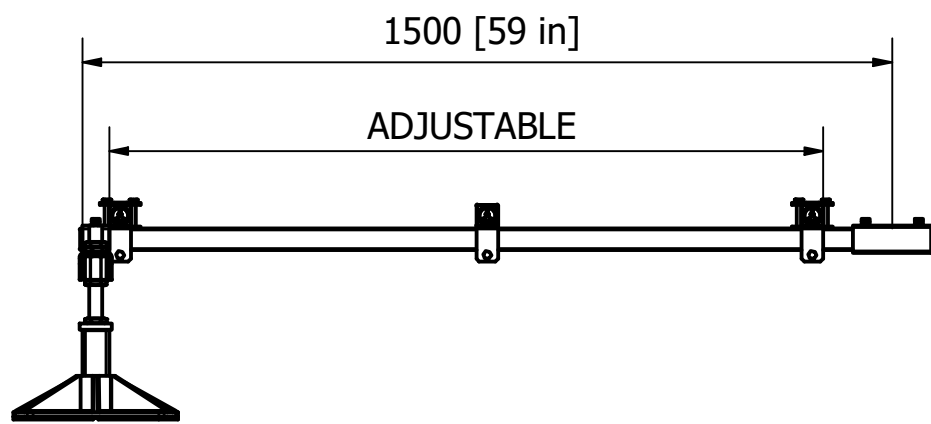
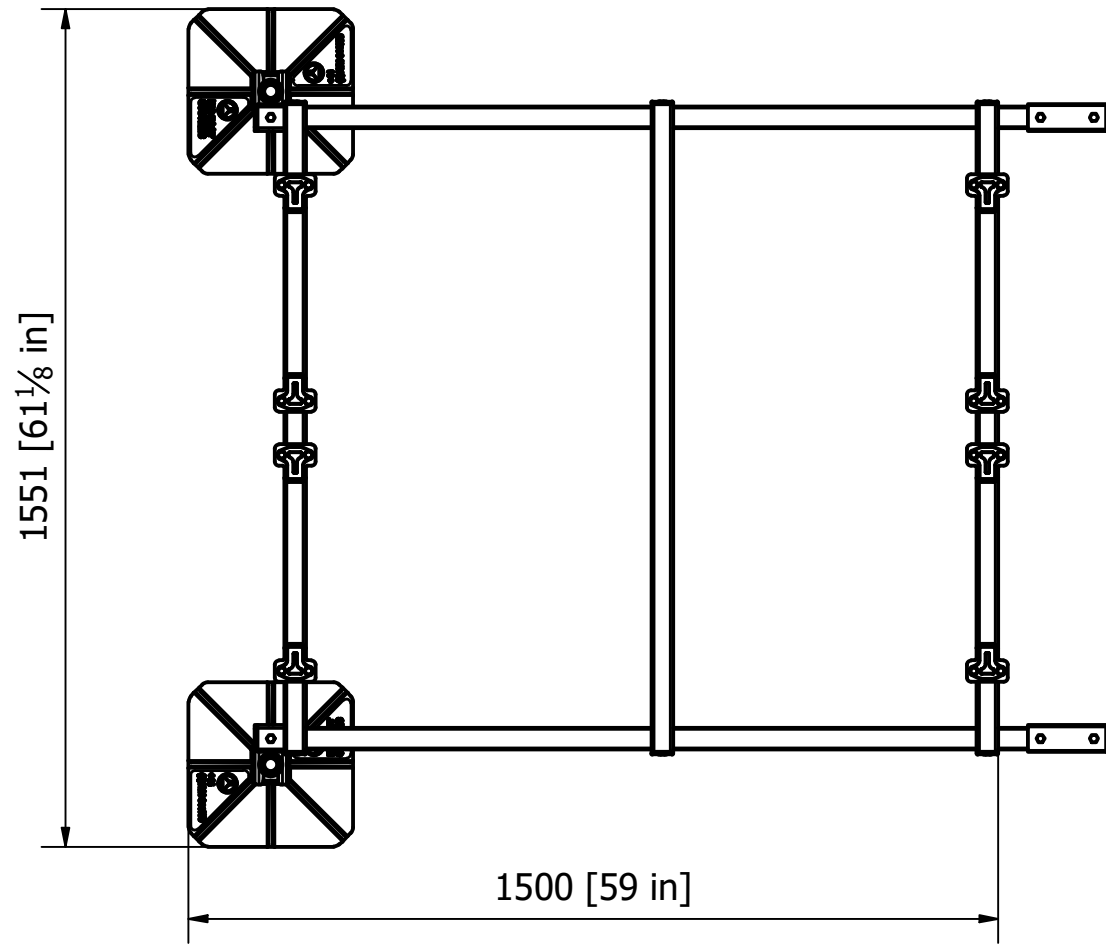


PROJECT REF:	B9732 - MF XL EXTENDER
UNIT REF:	
FOOT PRESSURE:	
UDL:	

Material grade: BS EN 10219-1:2006 (S235JR). Welding standard: BS EN ISO 15614-1: 2016. Galvanizing standard: BS EN ISO 1461:2009
 Reference specification document "Custom Fabrication Specification" (BF-SPEC-050411) for further information
 Reference specification document "Big Foot Systems Steel Specification (BF-SPEC-230610) for further information

PARTS LIST			
ITEM	QTY		DESCRIPTION
1	2		40x40 CLAMP KIT
2	2		LD STD METAL PACK
3	3		MULTI FRAME CROSS BAR
4	2		305mm FOOT + MAT
5	2		40x40 CONNECTOR
6	2		1.5m 40x40 END BAR



Installation and application considerations should include health, safety and environmental needs, regulations and standards, codes of practice, climate conditions, installation location, product orientation, evaluation of the roof structure, composition, surface and condition, ancillary and complimentary products and materials. Big Foot Systems recommend that all rooftop products are handled and installed by suitably qualified persons. All scheme designs are based on the use of Big Foot Systems' products and materials only. Terms and conditions available on request

REV A	DATE:	
	DRAWN:	
	CHECKED:	
 3rd ANGLE PROJECTION		

SCALE: 1 : 14	A3
DIMENSIONS IN mm U.O.S	
TOLERANCES: 0.0 ± 0.5mm U.O.S	
SHEET 1 OF 1	

TITLE: B9732 - MULTI FRAME XL EXTENDER
DWG No. B9732.dwg
THIS DRAWING IS COPYRIGHT AND THE PROPERTY OF BIG FOOT SYSTEMS LIMITED

