

# Technical data sheet

## SmellyJelly® Minis

### Fragrancing gel



The importance of coil cleaning cannot be underestimated, and as a perfect finishing touch - Advanced has developed the SmellyJelly® Minis. It releases a pleasant fragrance that gives a 'just-cleaned' freshness to the evaporator and its environment.

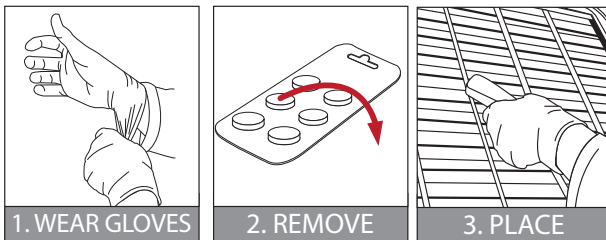
#### PRODUCT SPECIFICATION

Name	SmellyJelly®
Product Code	See below
Packing Quantity (ml, L)	20 Cards
Packing Size (L x H x D cm)	30 x 27 x 12.5
Shipping Weight (kg)	1.9
Shipping Volume (m3)	0.0125

#### Special Features

- Designed for large fan coil and cassette units.

### Directions of use



Remove gel from packaging and place one SmellyJelly® on a clean, flat surface, ideally just before the discharge grille. However, in cassette units, placing the gel on the back of the filter may be required. Once in the air stream, SmellyJelly® Mini will begin to work. As it works it will evaporate and shrink. Evaporation rate varies with cooling/heating. Replace as required when fragrance has been exhausted. Place card with instructions inside unit for future reference.

Part No.	Fragrance
S090057GB	SmellyJelly® Mini Orange
S090017	SmellyJelly® Mini Citrus
S090018	SmellyJelly® Mini Floral
S090050GB	SmellyJelly® Mini Apple
S090020	SmellyJelly® Mini Morning
S090021	SmellyJelly® Mini Mountain
S090054MWE	SmellyJelly® Mini Mixed (Western Europe)
S090056MSC	SmellyJelly® Mini Mixed (Scandinavia)
S090055MEE	SmellyJelly® Mini Mixed (Eastern Europe)

# Technical data sheet

**Advanced Engineering Ltd**  
Guardian House, Stroudley Road  
Basingstoke, Hampshire, RG24 8NL, UK  
Tel +44(0)1256 460300  
www.advancedengineering.co.uk

**advanced  
engineering**

		<p><b>SmellyJelly® Orange Warning</b> Contains: D-Limonene</p>
<p>H317: May cause an allergic skin reaction. H411: Toxic to aquatic life with long lasting effects. EUH208: Contains Limonene. May produce an allergic reaction. P102: Keep out of reach of children. P262: Do not get in eyes, on skin, or on clothing. P264: Wash hands thoroughly after handling. P280: Wear protective gloves. P302+P350: IF ON SKIN: Gently wash with plenty of soap and water.</p>		





**SmellyJelly® Mini Orange**  
**S090057GB**

		<p><b>SmellyJelly® Apple</b></p>
<p>EUH208: Contains hexyl salicylate. May produce an allergic reaction. H412: Harmful to aquatic life with long lasting effects. P102: Keep out of reach of children. P262: Do not get in eyes, on skin, or on clothing. P264: Wash hands thoroughly after handling. P280: Wear protective gloves. P302+350: IF ON SKIN: Gently wash with plenty of soap and water.</p>		




**SmellyJelly® Mini Apple**  
**S090050GB**

		<p><b>SmellyJelly® Citrus Warning</b> Fragrance - Citrus Trio 1059</p>
<p>H317: May cause an allergic skin reaction. H411: Toxic to aquatic life with long lasting effects. EUH208: Contains D-LIMONENE; CITRAL; GERANIOL; NEROLEX (SRS) NEROL 900 (BBA); C12H240 (2); C12H240 (1). May produce an allergic reaction. P102: Keep out of reach of children. P262: Do not get in eyes, on skin, or on clothing. P264: Wash hands thoroughly after handling. P280: Wear protective gloves. P302+P350: IF ON SKIN: Gently wash with plenty of soap and water.</p>		





**SmellyJelly® Mini Citrus**  
**S090017**

		<p><b>SmellyJelly® Floral Warning</b></p>
<p>EUH208: Contains 2-methyl-3-(p-isopropylphenyl) propionaldehyde, amyl cinnamic aldehyde, benzyl salicylate, hexyl cinnamic aldehyde, pinenes. May produce an allergic reaction. H317: May cause an allergic skin reaction. H412: Harmful to aquatic life with long lasting effects. P102: Keep out of reach of children. P262: Do not get in eyes, on skin, or on clothing. P264: Wash hands thoroughly after handling. P280: Wear protective gloves. P302+350: IF ON SKIN: Gently wash with plenty of soap and water.</p>		



**SmellyJelly® Mini Floral**  
**S090018**

		<p><b>SmellyJelly® Morning Warning</b> Fragrance - NATSU FO1/2 M000013</p>
<p>EUH208: Contains c13h1603, helional, p-tert-butyl-alpha-methylhydrocinnamic aldehyde. May produce an allergic reaction. H317: May cause an allergic skin reaction. H411: Toxic to aquatic life with long lasting effects. P102: Keep out of reach of children. P262: Do not get in eyes, on skin, or on clothing. P264: Wash hands thoroughly after handling. P280: Wear protective gloves. P302+350: IF ON SKIN: Gently wash with plenty of soap and water.</p>		





**SmellyJelly® Mini Morning**  
**S090020**

		<p><b>SmellyJelly® Mountain</b></p>
<p>EUH208: Contains d-limonene, hexyl cinnamic aldehyde, hydroxycitronellal, lixetone, citronellol. May produce an allergic reaction. H412: Harmful to aquatic life with long lasting effects. P102: Keep out of reach of children. P262: Do not get in eyes, on skin, or on clothing. P264: Wash hands thoroughly after handling. P280: Wear protective gloves. P302+P350: IF ON SKIN: Gently wash with plenty of soap and water.</p>		



**SmellyJelly® Mini Mountain**  
**S090021**

		<p><b>SmellyJelly® Mixed Warning</b> UN3077 Contains: Fragrance - NATSU FO1/2 M000013, Fragrance - Citrus Trio 1059, D-Limonene</p>
<p>EUH208: Contains 2-methyl-3-(p-isopropylphenyl) propionaldehyde, amyl cinnamic aldehyde, benzyl salicylate, hexyl cinnamic aldehyde, pinenes, Limonene, hexyl salicylate, CITRAL; GERANIOL; NEROLEX (SRS) NEROL 900 (BBA); C12H240 (2); C12H240 (1), ISO E SUPER; C13H1603; HELIONAL; P-TERT-BUTYL ALPHAMETHYLHYDROCINNAMIC ALDEHYDE, hydroxycitronellal, lixetone, citronellol. May produce an allergic reaction. H317: May cause an allergic skin reaction. H412: Harmful to aquatic life with long lasting effects. H411: Toxic to aquatic life with long lasting effects. P102: Keep out of reach of children. P262: Do not get in eyes, on skin, or on clothing. P264: Wash hands thoroughly after handling. P280: Wear protective gloves. P302+350: IF ON SKIN: Gently wash with plenty of soap and water.</p>		



**SmellyJelly® Mini Mixed**  
**S090054MWE - Western Europe**  
**S090056MSC - Scandinavia**  
**S090055MEE - Eastern Europe**

This product should only be used by trained operatives. The "directions for use" are recommendations only; correct use will depend upon circumstances. To the extent permitted, no liability can be accepted for loss resulting from its use. Advanced Engineering follows a policy of continual product improvement. For this reason, some materials and specifications could change without notice. Consult Safety Data Sheet for full safety information. Always wear suitable PPE.

TDS Subject to change, document valid for 12 months from the following date, Last correct on: 29/01/2019