

the complete solution



**BIG FOOT
SYSTEMS**

...to support building services and access equipment on flat roofs

free 48hr
design service

www.bigfootsystems.co.uk

Index

■ GUIDE TO BIG FOOT SYSTEMS	4
■ BENEFITS	6
■ CUSTOM FRAMEWORKS	8
■ MODULAR FRAMEWORKS	11
■ H FRAME SUPPORT SYSTEM	12
■ MULTI FOOT SUPPORT SYSTEM	14
■ FIX-IT FOOT SUPPORT SYSTEM	15
■ BIG FOOT WALKWAYS	16
■ STEP OVERS & WALKWAY SLABS	17
■ PLATFORMS, SWAN NECKS & LADDER ANCHOR	18
■ BBJ ACCESSORIES & FIXINGS	19

Big Foot Systems takes no responsibility for the condition of the roof on which our equipment is to be used. You must ensure that the substrate on which the Big Foot is intended for use is structurally sound enough to take the weight and point loadings we have indicated.

All Big Foot products must be installed in line with the guarantees and recommendations of the manufacturer of the roofing system. The manufacturer of PVC membranes should advise on the susceptibility to migration of plasticizers and specific recommendations should be adhered to so that the roof guarantee is not affected.

The complete solution to supporting building services and access equipment on a flat roof

Big Foot Systems are designed to support anything that is installed on a flat roof. This creates a safe and secure support for all air conditioning and refrigeration roof plant and associated services. Big Foot Systems have been used on countless prestigious projects including Heathrow Airport, Royal British Legion (Haig House) and the University of Leeds.

- **Saves you time and reduces cost – quicker and cheaper than concrete!**
- **No penetration of roof membrane**
- **Re-roof without decommissioning plant**
- **Improves aesthetics**
- **Install in all weathers**



Guide to Big Foot Systems







There are no limits to what can be supported with a Big Foot System. Most simple installations can be successfully achieved using the standard range of modular frames.

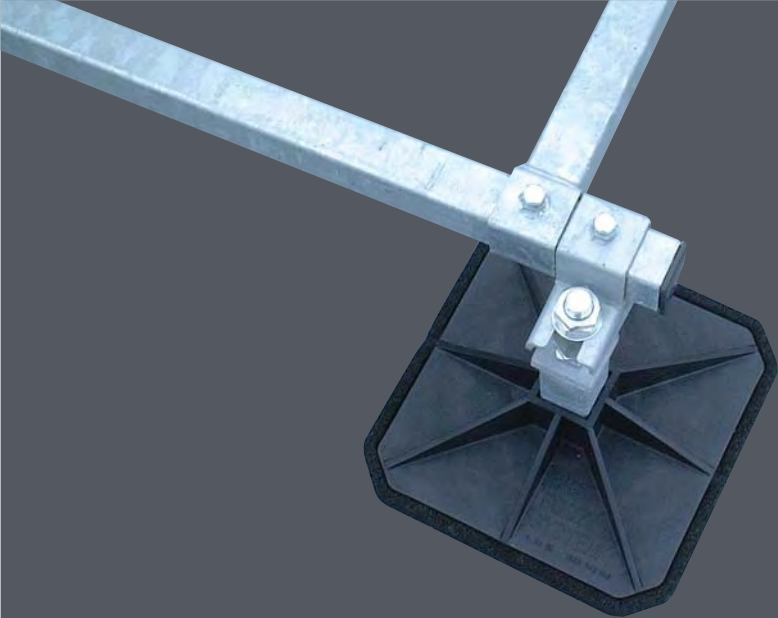
On more complex projects we offer a custom frame design service. The design team simply require the weights and dimensions of the plant with a roof plan if available, to produce a quotation and advise weight loadings. In addition, made to measure H Frames can be manufactured for specialist heavy duty pipe, duct and cable supports.

Due to the flexible nature of the Big Foot System, it is possible to change elements of the frame design during or even after the completion of the project.

The growth in single ply roofing membranes has driven the need for free standing roofing support systems. Big Foot Systems have continued to improve the product range and technical support to meet the challenges of modern construction techniques.



	FRAMEWORKS pg. 6-11	H FRAME SET pg. 12-13	MULTI FOOT pg. 14	FIX-IT FOOT pg. 15	WALKWAYS pg. 16-17
 units	✓			✓ <small>FOR SMALL UNITS</small>	
 access					✓
 pipework	✓ <small>RUNNING ALONGSIDE UNITS</small>	✓	✓	✓	
 ductwork	✓ <small>RUNNING ALONGSIDE UNITS</small>	✓	✓	✓	
 cable trays	✓ <small>RUNNING ALONGSIDE UNITS</small>	✓	✓	✓	
 busbars	✓ <small>RUNNING ALONGSIDE UNITS</small>		✓	✓	



Benefits

- SETS THE STANDARD!
- 48 HOUR DESIGN SERVICE – LET US DO THE WORK
- 15 YEAR WARRANTY*
- SPREADS THE WEIGHT OF THE SUPPORTED PLANT
- EACH FOOT CAN BE REMOVED INDIVIDUALLY TO ALLOW EASY ACCESS TO THE ROOF SURFACE DURING RE-ROOFING OR REFURBISHMENT WITHOUT DECOMMISSIONING EQUIPMENT
- NO PENETRATION OF THE WATERPROOF MEMBRANE, ELIMINATING ANY DIFFICULT DETAILING, THEREFORE REDUCING THE RISK OF LEAKS
- COST EFFECTIVE
- COMPLETE ON-SITE FLEXIBILITY BOTH DURING AND AFTER INSTALLATION
- FLATPACK SYSTEM FOR EASY TRANSPORT
- HOT DIPPED GALVANISED METALWORK
- ELIMINATES THE RISK TO ROOF GUARANTEE

* applies in the UK



RE-ROOFING

The Big Foot System legs may be removed individually for re-roofing/ refurbishment, without decommissioning or removing the equipment.



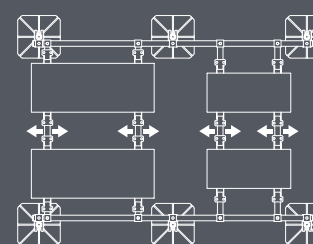
HEIGHT ADJUSTMENT

The legs incorporate over 100mm of vertical height adjustment, to take up variations in the roof. (300mm: stepped roof option).



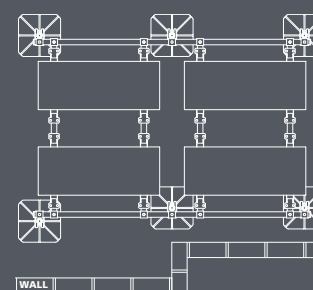
CONDENSER CLAMPS

The repositionable clamps locate on both sides of the cross-bars, locking down onto the feet of the condenser units as they are tightened.



LINEAR ADJUSTMENT

The cross-bars which support the condenser units can slide along the plain bars into the position required, then are locked securely in place.



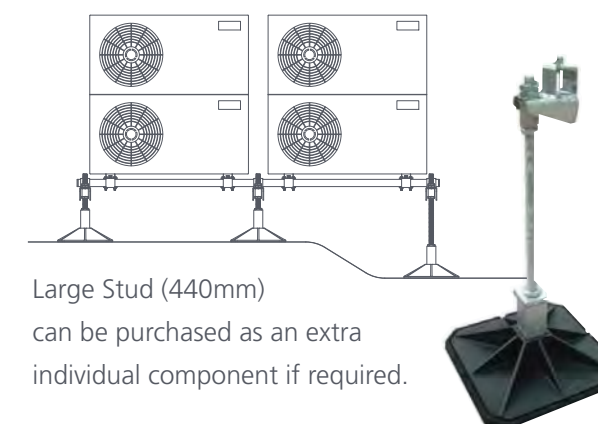
LEG & BRACKET POSITIONING

The leg & bracket are usually positioned outside the framework, but can be positioned inside if there is an obstruction.

IMPORTANT: The purchaser or installer of these products must satisfy themselves that the roof structure is of sufficient strength to take the combined weight of the Big Foot System and units.

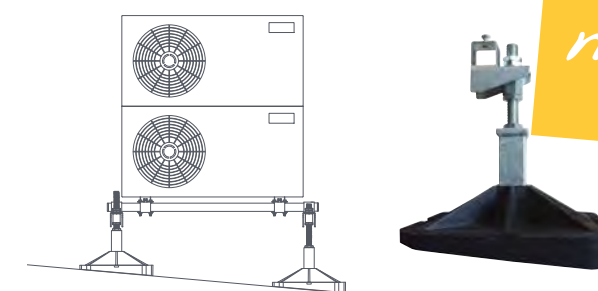
HEIGHT ADJUSTMENT:

255mm – 360mm: floor to framework
(255mm – 560mm: stepped roof option)



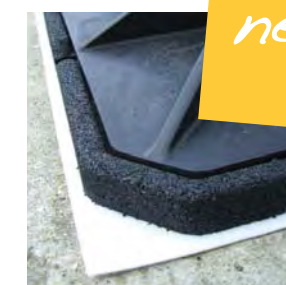
ANGLED AV MATS:

The solution to sloping roofs...
2.5° & 5° AV mats are available for both 305mm & 450mm feet.



FEET FLEECES:

Recommended for use on PVC membrane roof surfaces to prevent migration of plasticizers. Supplied cut to Foot sizes.



OUR FURTHER EXPANDED RANGE INCLUDES 2 NEW SIZES OF BIG FOOT:

- 600mm** - allowing reduced weight loadings. (AV mat available).
- 200mm** - designed with fixing holes, for internal applications.

FREE DESIGN
SERVICECHILLERS
MAIDENHEAD

VRV'S

SOLAR PANELS

AHU SUPPORT

WALKWAY

STEP OVER

HSBC LEICESTER



Custom Frameworks

With a plan of your roof and dimensions / weights of the plant, we can specify complete Big Foot frameworks to support up to 15 tons. The system is completely flexible – we can change any part of the design of the frame at any time! We can reduce the weight loadings (kN/m²) by changing the foot size, number of leg assemblies and metalwork on the frame.

The Big Foot mouldings (305mm, 450mm and 600mm) are made of Glass filled Nylon with UV protection. An independent anti-vibration mat is provided for each foot and all metalwork is hot dip galvanised for all weather protection.

■ SITE VISIT

■ 48 HRS DESIGN SERVICE

■ DETAILED PROJECT COSTINGS

Our system allows for each leg assembly to be removed individually whilst the roof surface is maintained or even re-roofed without the need to decommission and remove equipment.

Big Foot Systems set the standard of installation on site, providing the consultant with a method of installation which is quick, clean, practical and aesthetically pleasing.

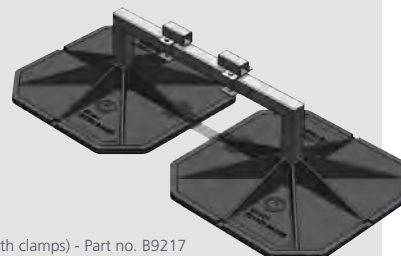
I Beam Assembly

The Mega Foot I Beam Assembly is ideal for supporting heavy steels over large spans.

KIT INCLUDES:

- 2 x 600mm feet
- 2 x AV mats
- 1 x link assembly
- 2 x clamp kits

Mega Foot I Beam Assembly (with clamps) - Part no. B9217
Mega Foot I Beam Assembly (without clamps) - Part no. B9224



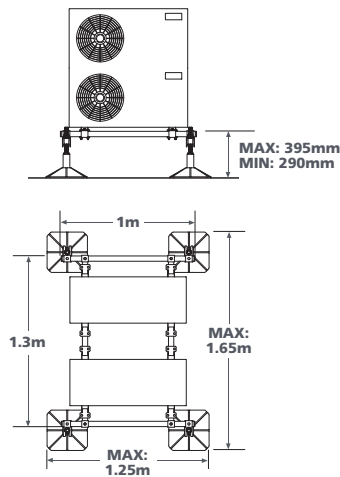


Modular Frameworks

There are three basic modular frameworks available in 1m, 2m and 3m versions. The modular frameworks come with 305mm feet which are provided with anti-vibration

mats to fit underneath. The frame is constructed from 40mm x 40mm standard box section. For heavier loads custom frameworks are available (see page 8).

RECOMMENDED LOAD:
480kg (13.5kN/m²)



SYSTEM COMPONENTS

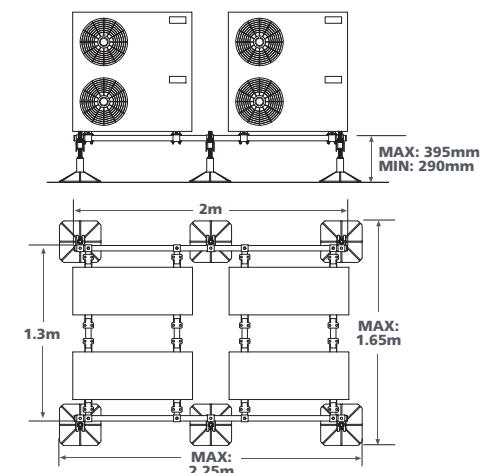
- 2 x 1m PLAIN BARS – 40 x 40 SECTION
- 2 x 1.2m CROSS BARS – 40 x 40 SECTION
- 4 x LEG ASSEMBLIES WITH AV MATS – 305mm
- 2 x CLAMP KITS



2 Unit System Framework – Part no. B6075

1 METRE SYSTEM FRAMEWORK

RECOMMENDED LOAD:
720kg (13.8kN/m²)



SYSTEM COMPONENTS

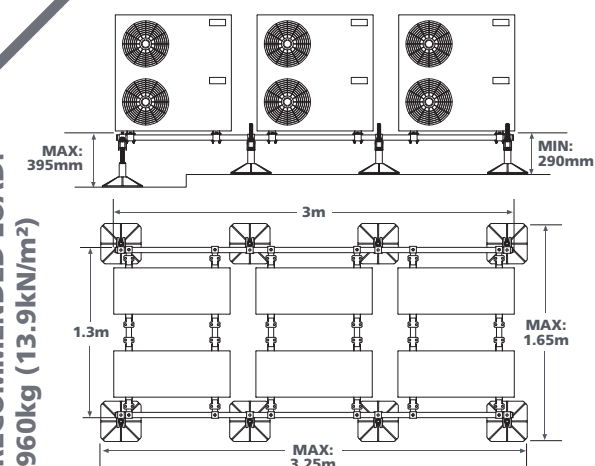
- 2 x 2m PLAIN BARS – 40 x 40 SECTION
- 4 x 1.2m CROSS BARS – 40 x 40 SECTION
- 6 x LEG ASSEMBLIES WITH AV MATS – 305mm
- 4 x CLAMP KITS



4 Unit System Framework – Part no. B6077

2 METRE SYSTEM FRAMEWORK

RECOMMENDED LOAD:
960kg (13.9kN/m²)



SYSTEM COMPONENTS

- 2 x 3m PLAIN BARS – 40 x 40 SECTION
- 6 x 1.2m CROSS BARS – 40 x 40 SECTION
- 8 x LEG ASSEMBLIES WITH AV MATS – 305mm
- 6 x CLAMP KITS



6 Unit System Framework – Part no. B6078

3 METRE SYSTEM FRAMEWORK



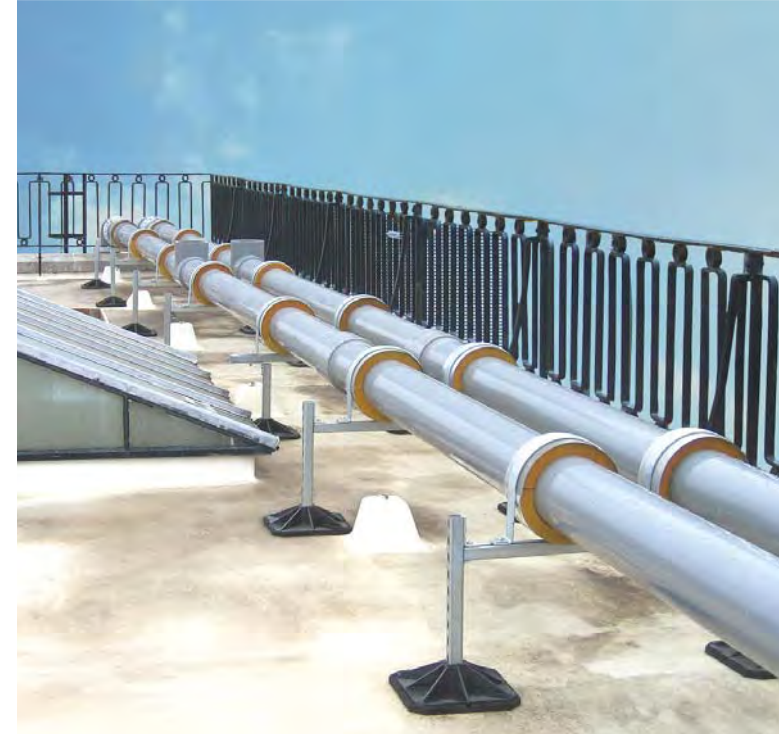
pipework



ductwork



cable trays



H Frame Support System

The H Frame Set is a quick, versatile and economical solution for supporting pipework, ductwork, cable trays or any combination of these. You provide your own strut, keeping the duct and pipe installations low cost and totally flexible by fabricating the frameworks on-site.

Using inserts, the feet adapt to accommodate 41mm x 41mm off-the-shelf strut. The majority of installations require 305mm H Frames but where a greater load spread is required 450mm and 600mm H Frames are also available.

SMALL FEET: 305 x 305 x 75mm
Max. recommended load per set: 100kg

LARGE FEET: 450 x 450 x 100mm
Max. recommended load per set: 150kg

MEGA FEET: 600 x 600 x 100mm
Max. recommended load per set: 250kg

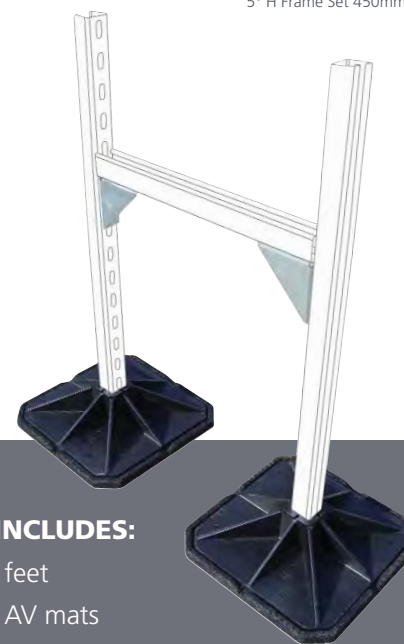


On larger, more complex projects, we are able to offer a pre-fabricated H Frame design service.

• See page 19 for our range of fixings

H Frame Set 305mm – Part no. B6088
H Frame Set 450mm – Part no. B6089
Mega H Frame Set – Part no. B9222

2.5° H Frame Set 305mm – Part no. B9218
2.5° H Frame Set 450mm – Part no. B9220
5° H Frame Set 305mm – Part no. B9219
5° H Frame Set 450mm – Part no. B9221

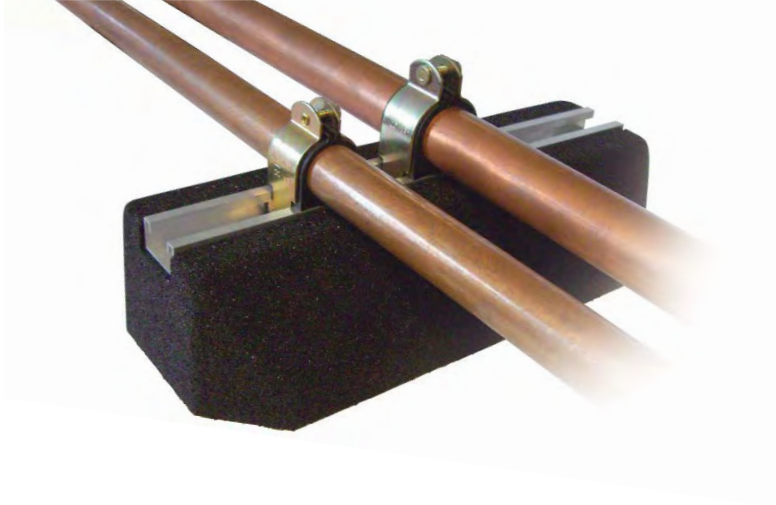


KIT INCLUDES:

- 2 x feet
- 2 x AV mats
- 2 x strut inserts
- 2 x angle brackets
- 4 x M10 bolts
- 4 x square channel nuts

KIT DOES NOT INCLUDE STRUT

Pre-assembled H Frame metalwork now available – contact us for more info.



Multi Foot Support System

The Multi Foot is designed to be a multi-purpose ductwork, cable and pipework support.

The Multi Foot is an extremely versatile and cost effective one-piece support available in two sizes with optional AV mats.

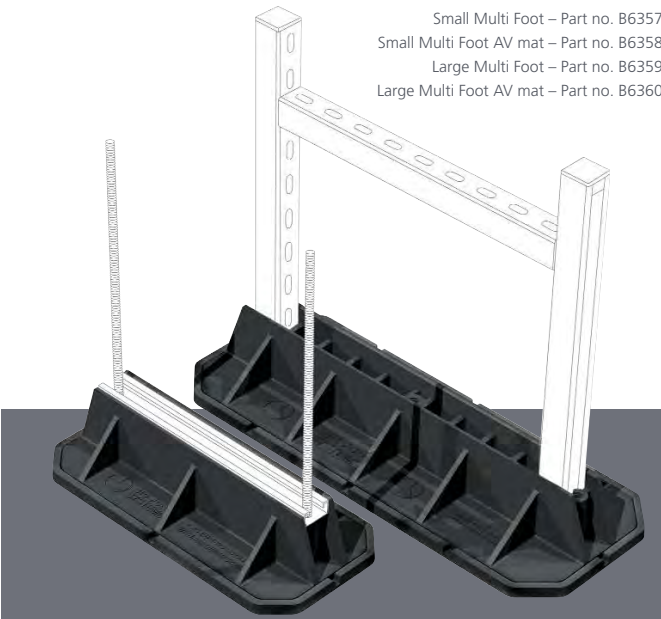
SMALL: 400 x 180 x 95mm
Max. recommended load per foot: 77kg

LARGE: 600 x 220 x 95mm
Max. recommended load per foot: 142kg



Multi Foot can be used to support small and large pipework systems, cable trays, ductwork or any combination of these.

- See page 19 for our range of fixings suitable for use with Multi Foot



DESIGNED TO ACCOMMODATE:

- 41mm x 41mm strut
- 40mm wide channel (horizontally)
- 12mm threaded rod (vertically)

STRUT, CHANNEL & THREADED ROD NOT SUPPLIED

Fix-it Foot Support System

The six sizes of Fix-it Foot are a neat and tidy support solution from Big Foot. This foot has 40mm x 20mm aluminium channel recessed into the top face, allowing fixing of the services resting across the feet. Suitable for smaller splits, pipework, duct runs and cable tray runs.

Recesses in the underside allow for small debris on the roof surface. The Fix-it Foot is made of durable recycled rubber, which offers built-in anti-vibration and makes it both an economical and environmentally responsible piece of kit!

- See page 19 for our range of fixings suitable for use with Fix-it Feet



<p>FIX-IT FOOT 250 250 x 180 x 95mm Max. load per foot: 100kg Part no. B6735</p>	
<p>FIX-IT FOOT 400 400 x 180 x 95mm Max. load per foot: 200kg Part no. B6736</p>	
<p>FIX-IT FOOT 600 600 x 220 x 95mm Max. load per foot: 300kg Part no. B6737</p>	
<p>FIX-IT FOOT 1m 1000 x 180 x 95mm Max. load per foot: 500kg Part no. B9096</p>	
<p>FIX-IT FOOT LOW 250 250 x 130 x 50mm Max. load per foot: 50kg Part no. B9043</p>	
<p>FIX-IT FOOT LOW 400 400 x 130 x 50mm Max. load per foot: 100kg Part no. B9045</p>	
<p>Fix-it Foot Lows are suitable for supporting small pipework, ductwork runs & cable trays (not recommended for small units).</p>	



Big Foot Walkways

The Big Foot Walkways are ideal for establishing clear, safe pathways around installations on a flat roof. It offers a secure route for service engineers to gain access to plant and for managing the flow of other personnel.

Once on-site, the Walkways are very simple and quick to assemble. The metalwork is galvanised to withstand the year-round elements on a roof, and the gritted top to the Walkway grating provides a permanent non-slip surface in any weather.

Big Foot Systems will be happy to specify a Walkway designed specially to meet your needs. All you need to do is provide accurate drawings of the flat roof and its existing installations and we will supply you with a planned layout and quote.



Step Overs

Modular Step Overs are available with 3, 4 and 5 steps and a range of middle section lengths. The four legs on each Step Over are adjustable in height, with 450mm feet (and AV mats) for stability.

- MODULAR SYSTEM
- 3 DIFFERENT STEP OPTIONS – 3, 4 & 5
- 5 LENGTH MID-SECTIONS AVAILABLE FROM 1m UP TO 3m
- ADJUSTABLE LEG HEIGHT
- COMPATIBLE WITH WALKWAYS
- OPTIONAL HAND RAILS



- MODULAR - CREATE YOUR OWN OR WE CAN DESIGN ONE FOR YOU
- QUICK AND SIMPLE ASSEMBLY
- EASY TO REMOVE A SECTION FOR ACCESS
- DESIGNED TO SPREAD WEIGHT ON DELICATE ROOF SURFACES
- FLAT PACKED FOR EASY TRANSPORT
- NON-SLIP FIBREGLASS GRATING AVAILABLE IN YELLOW OR GREY
- GALVANISED METALWORK
- OPTIONAL HAND RAILS

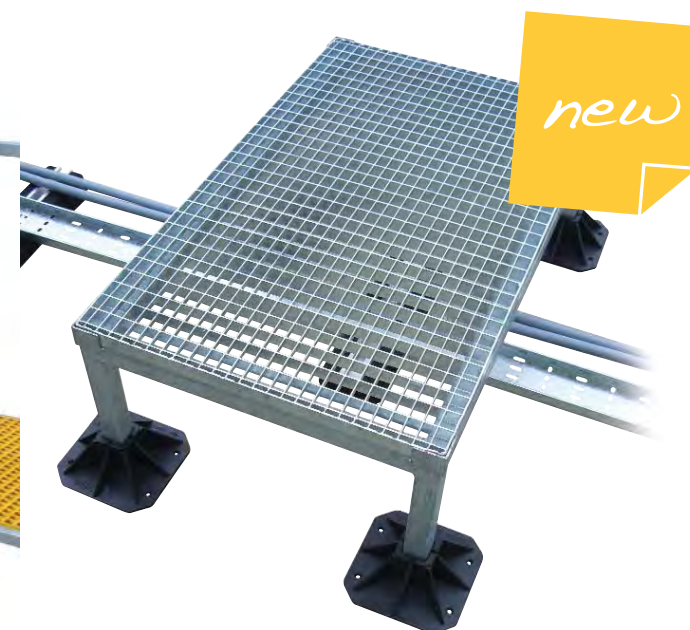
Rapid Walkway

This beautifully simple walkway system is supported on recycled rubber blocks. The walkway has rapid on site fabrication of up to 30m per hour with straight lengths available in sections up to 3m.



Step Over Platforms

These simple platforms are ideal to allow safe passage over small hazards, e.g. small pipe runs.



Walkway Slabs

Ideal for walkways and to protect roof surfaces, with underside detail to allow for small debris on roof.

500 x 500 x 45mm
Part no. B6416



Platforms



Simply fitted into the top of the Big Foot mouldings, these Platforms provide a versatile support system. Available with a flat top or with 2 or 4 sides, they have a central M10 threaded insert and are supplied in pairs with Big Feet and AV mats.

FLAT PLATFORM
Useable area: 126 x 126mm
305mm – Part no. B9098
450mm – Part no. B9101

2 SIDED PLATFORM
Useable area: 114 x 126mm
305mm – Part no. B9099
450mm – Part no. B9102

4 SIDED PLATFORM
Useable area: 114 x 114mm
305mm – Part no. B9100
450mm – Part no. B9103

Height off floor:
305mm Foot – 91mm
450mm Foot – 112mm

Ladder Anchor Swan Necks

The Big Foot Ladder Anchor is a simple safety device that sits under the feet of your ladder, preventing it from slipping, sinking and twisting. It can also save labour costs by eliminating the need to 'foot' the ladder.

Ladder Anchor (600 x 50mm) – Part no. B9289



A quick and simple solution for when pipe and cables have to penetrate the roof surface. The large flange around the foot of the Swan Neck allows a full seal with the roof membrane.

125 x 125mm (1 outlet) – Part no. B9148
200 x 200mm (1 outlet) – Part no. B9149
125 x 250mm (1 outlet) – Part no. B9150
125 x 500mm (1 outlet) – Part no. B9151
200 x 250mm (2 outlets) – Part no. B9152

- 2mm ALUMINIUM PLATE IS LIGHT WEIGHT AND WON'T GO RUSTY
- FULL HOOD PROTECTS AGAINST RAIN INGRESS
- ROUNDED OUTLET TO PROTECT PIPES, INSULATION & CABLES
- 5 DESIGNS OFF-THE-SHELF (OTHER SIZES AVAILABLE ON REQUEST)

BBJ Accessories & Fixings

Vibromats

The Vibromats are constructed from milled, sieved and graded Styrene Butadiene Rubber. Embedded in two of the Vibromats are metal plates inserted to a depth of 15mm which allow a condenser unit to be screwed directly onto the tile.



AV STRIP
1000 x 75 x 15mm
Multi purpose anti vibration strip
Part no. B6024



SMALL TILE
600 x 150 x 30mm
Inserted metal plate
Part no. B6491



LARGE TILE
1000 x 500 x 30mm
2 Inserted metal plates
Part no. B6282

Pipe Fixings (for H Frames, Multi Foot & Fix-it Foot)

FOR ALUMINIUM CHANNEL	Insulclamps		BBJ Insulclamps have a thermo-rubber cushion between two metal parts. Ideal for bigger installations, can be used internally and externally.
	Quick Positioning Clips (QPCs)		BBJ QPC's are fitted into standard strut channels by a single twist. Ideal for smaller installations, can be used internally and externally.
	Channel Clips		BBJ Channel Clips have a secure ratchet fastening mechanism. Fitted to channel with a quick, simple twist action.
FOR M8 & M10 STUDDING	Metal Hangers		BBJ Metal Hangers can be used in areas that are fire sensitive and hold both gas and liquid pipework lines, removing the need for cable trays.
	Plastic Hangers		BBJ Plastic Hangers have a secure ratchet fastening mechanism and hold both gas and liquid pipework lines, removing the need for cable trays.
	Stud Clips		BBJ Stud Clips have a secure ratchet fastening mechanism. Fitted to studding with a quick, simple twist action.
	Quick Positioning Hangers (QPHs)		BBJ QPH's have a secure ratchet fastening mechanism. Five sizes fit a wide range of pipe diameters, reducing the number of clips kept in stock.

Please contact us for further information on the full benefits of the BBJ fixings range.



Apex Way Hailsham East Sussex BN27 3WA UK
tel. +44 (0)1323 844 355 fax. +44 (0)1323 844 959
sales@bigfootsystems.co.uk www.bigfootsystems.co.uk



MANUFACTURED
IN GREAT BRITAIN