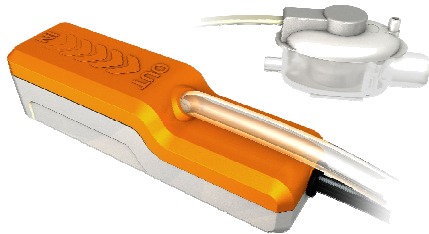


Si-20

PISTON PUMP



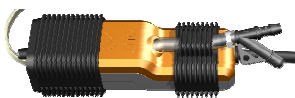
Inside mini-split pump

The Si-20 is design to easily fit **inside** mini-split air conditioning. (lineset free)

The piston technology is specifically designed for removing condensates from air conditioning systems. The Si-20 is fully reliable, in any kind of environment. Its operating sound level will remain silent whatever the volume of condensates.

BENEFITS

• Easy installation



- **Slim design.**
- Rubber damper: allows the pump to be put directly inside the mini-split air conditioning.
- Adequate cable lengths.
- "Drain Safe Device" aids connection to the discharge pipe. (pre-mounted)

• Silent



- Quiet in operation: **22 dBA.**
- The size of the air-conditioning unit and volume of condensates to be removed does not affect the operational sound level of the pump.
- **Unique rubber damper** specifically designed to **reduce vibration transmission to the mini split / wall.**
- Anti-vibration and condensate insulation included on suction line.

• « Sauermann inside » : Patented technology

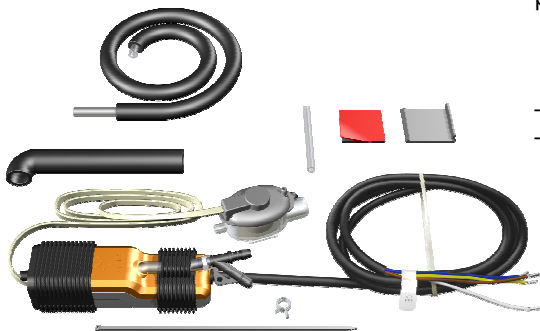


- **High performance:** Only one pump, for air conditioning unit up to 20 kW
- **High Reliability.**
- **High resistance to pollution** created by general environment. Capable of discharging small particles.
- The **Drain Safe Device** retains prime and prolongs the pump life.

• Energy saving

Improved performance and high flow rate **reduce operation time** and energy consumption.

KIT CONTENTS



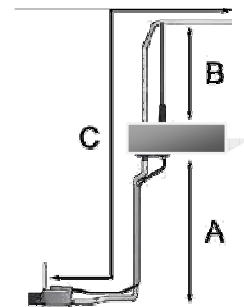
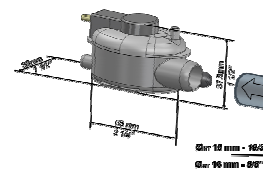
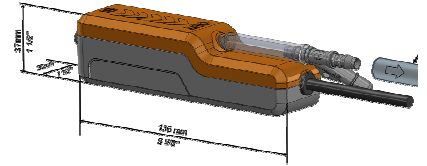
- Piston pump
 - Clear PVC tube Ø int. 6mm – L: 60mm, fitted with a « Drain Safe Device pre-mounted.
 - 2 anti-vibration rubber damper
 - 1.5 m power cable: 2 power wires, 2 safety contact wires.
 - Detection unit - SI2958, 0.63m cable
- Clear PVC tube Ø int. 6mm – L: 0.63m,
- Detection unit installation kit:
 - rubber elbow 90° Ø int. 15 x L 152 mm,
 - vent tube Ø int. 4 x L 75 mm,
 - mounting rail,
 - adhesive.
 - 3 double wire clamps.
 - 3 tie wraps, 2.5 x 200 mm

APPLICATIONS

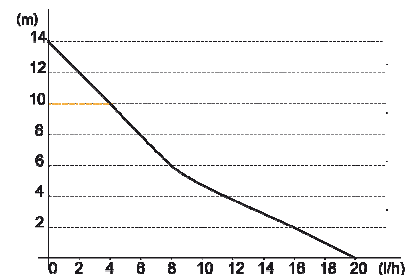
For use with any air-conditioning units, up to 20 kW:



TECHNICAL SPECIFICATION	
Max. flow rate	20 l/h
Max. suction head	3.0 m
Max. discharge head	10 m; flow rate = 4l/h
Max pressure	14 m; flow rate = 0l/h
Sound level at 1m according to EN ISO 3744 (Measured at LNE lab, pump operating with water, out of application)	22 dBA
Sound level in application at 1m: (Measured in Saueremann acoustic lab, pump operating with water)	≤ 25 dBA
Mains supply	230V~ 50/60Hz - 14 W
Insulation class	□ (double insulation)
Detection levels	On: 16mm, Off: 11mm, Safety: 19mm
Safety switch	NC 8 A resistive – 250V
Thermal protection (overheating)	115°C (auto-reset)
Operating conditions	100% - Continuous duty
Protection	IP X2
Pump dimensions	L136 x W38 x H37 mm
Safety standards	CE & EAC
RoHS directive	Compliant
WEEE directive	Compliant
Packaging	0.48kg L170 x W160 x H72 mm
Masterpack	6 pieces



ACTUAL FLOW RATES (l/h)					
Suction head (A)	Discharge head (B)	Total hose length using Ø int 6 mm, 1/4" – (C)			
		5 m	10 m	20 m	30 m
0 m	0 m	20	19	18	17
	2 m	16	15	14	13,5
	4 m	11,5	11	10,5	10
	6 m		8,5	7,5	6,5
	8 m		6	5	4
0.6 m	10 m		4	3,5	2,5
	0 m	14	13	12	11
	2 m	11	10	9	8
	4 m	7,5	7	6	5
	6 m		4,5	4	



RECOMMENDED ACCESSORIES



Clear PVC hose Ø int. 6mm (1/4")
 ACC 00105 : 5 m
 ACC 00150 : 50 m
 ACC 00151 : Braided, 50 m



6 self-sealing fittings for hose
 Ø int.6 mm (1/4")
 ACC 00205